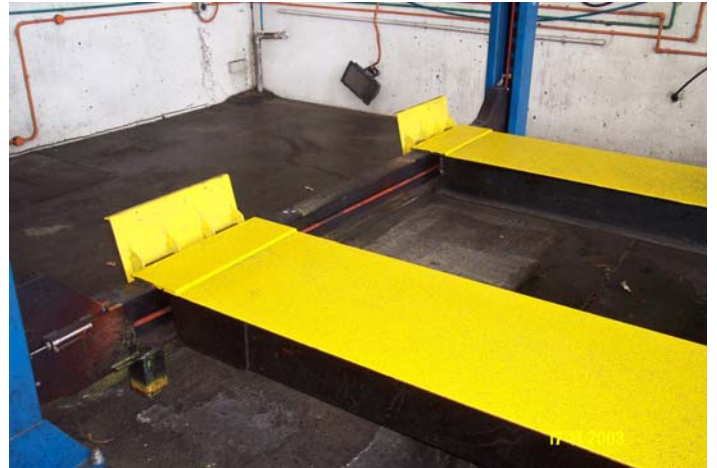


## Before



## After



**This ramp was found to be dangerous, employees were required to wash their bus after each shift with a pressure cleaner and grease remover, as they would remove the bus from the ramp they found that the front wheels would lock up and begin to slide off the ramp. We sprayed the ramp with Durabond and added 24 Aloxx grit for a slip resistant finish. The job took 1 day to complete.**

